

10' STANDARD IDLER ROLLER CONVEYOR WITH FORK LIFT LOADING

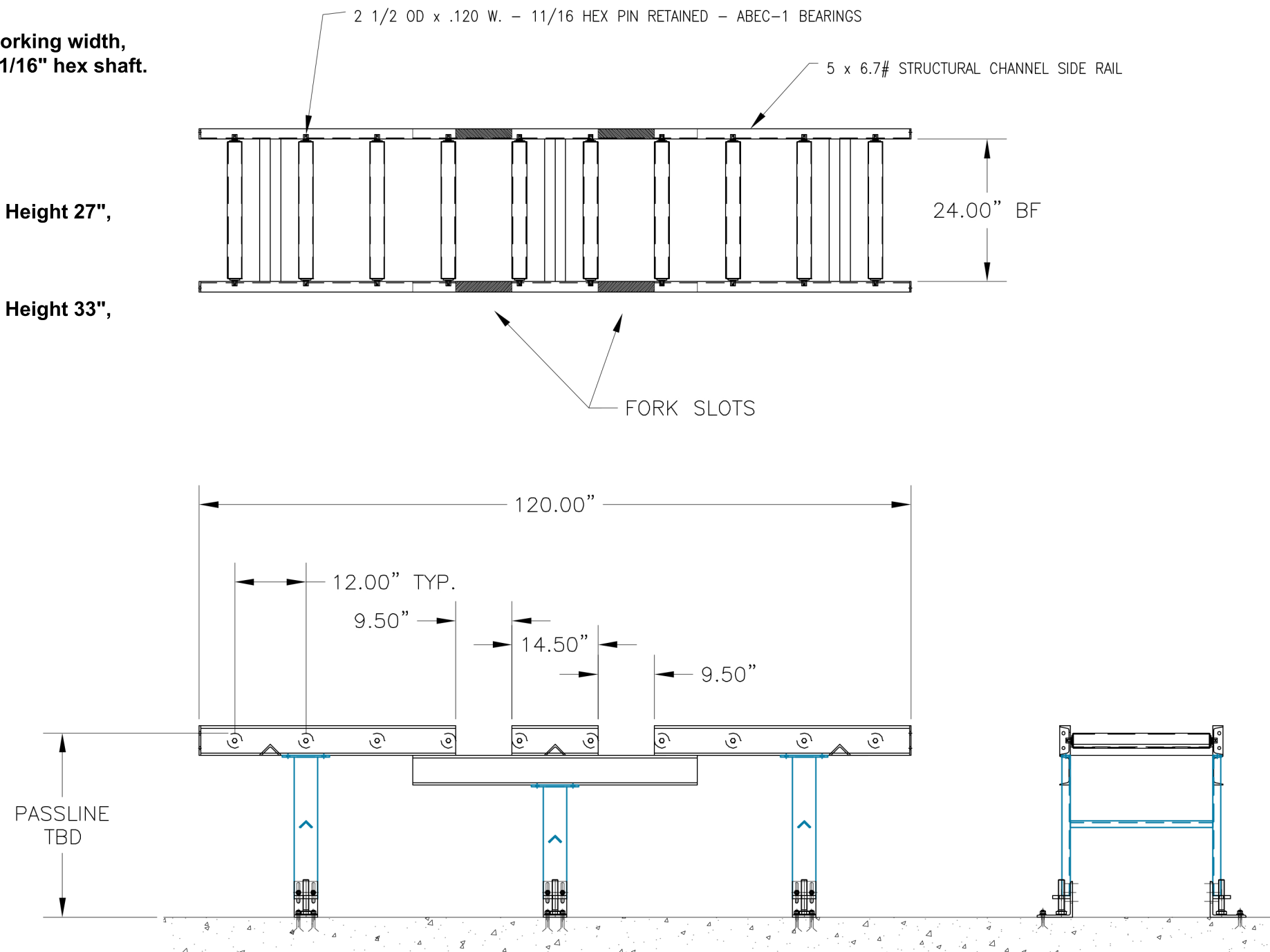
Specifications:

Rollers: 2-1/2" diameter x 11 ga wall, 24" working width, 12" on center, 700# capacity per roller, 1 1/16" hex shaft.

Frame: 5" x 6.7# channels.

Legs: Two types of Bolt on Legs;
R C S10 LA
 (3 Legs per conveyor) 4" x 5.4# channels, Height 27",
 +or- 3" Adjustable Leveling Bolt

R C S10 LB
 (3 Legs per conveyor) 4" x 5.4# channels, Height 33",
 +or- 3" Adjustable Leveling Bolt



24" WORKING
 WIDTH CONVEYOR

